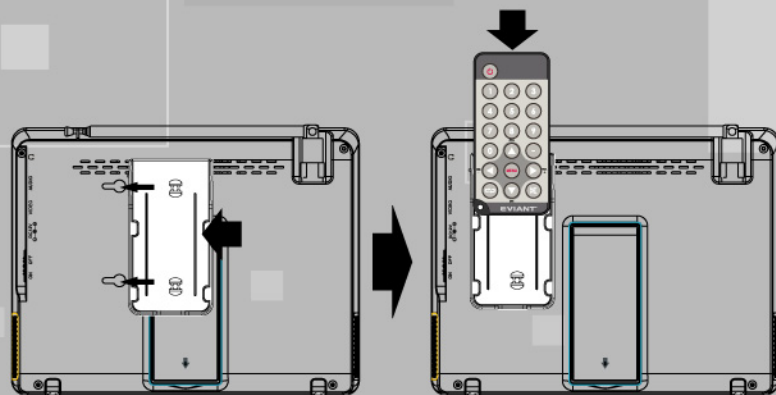
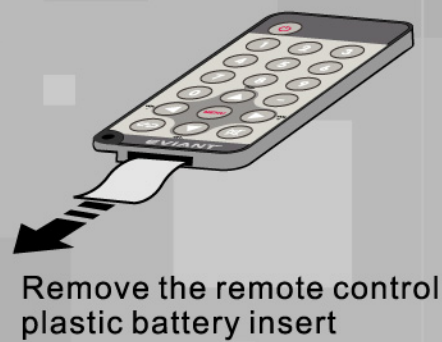
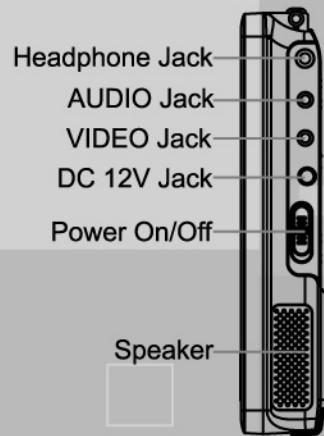
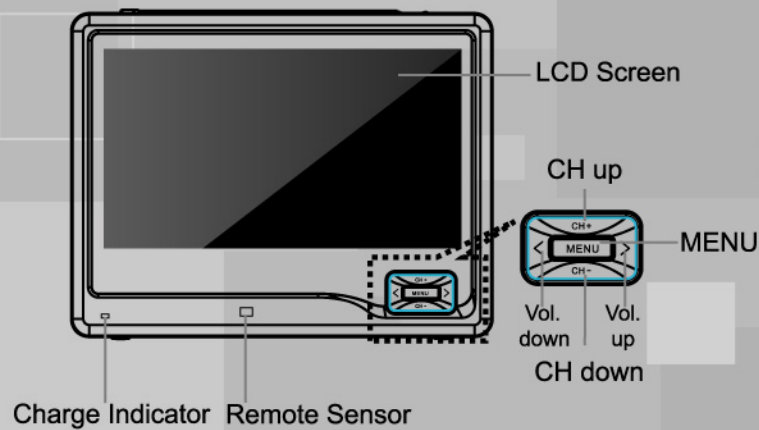


CONTROLS & CONNECTIONS



Install Remote Control Storage Bracket in slots on back of unit.

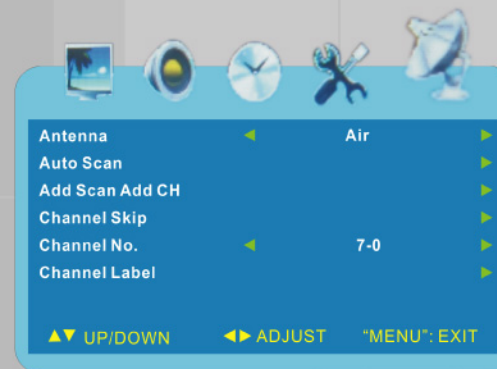
SETTING UP YOUR TV

- Power Adaptor**
- Extend Antenna**
- Power Switch**

Note: Your mini-TV comes with a build-in lithium ion rechargeable battery. Charge the battery fully before initial use. Charging time is normally 3 hours. A fully charged battery delivers about 2.5 hours of use.

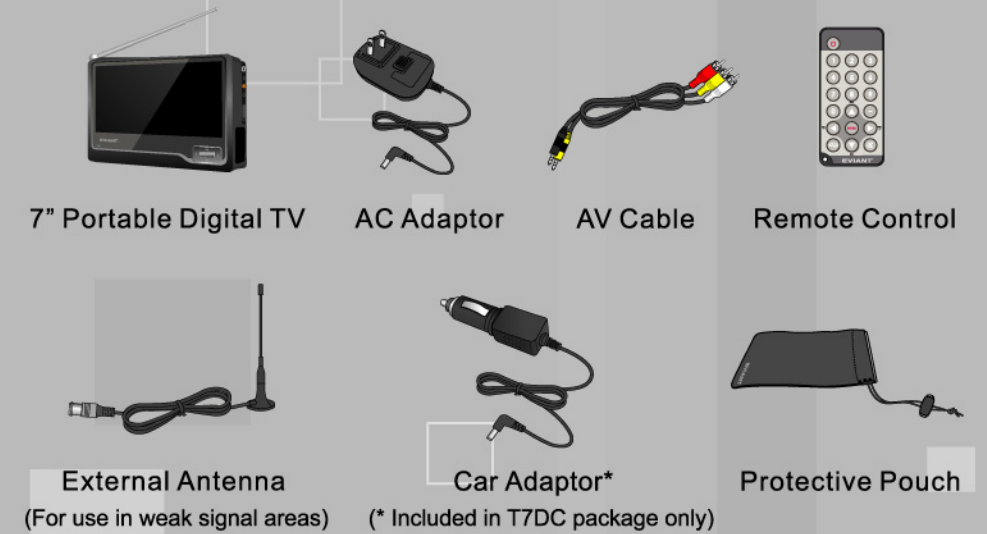
Scanning For Channels in Your Area

- First press "MENU", and then press ">" key to select the Channel sub-menu (satellite icon)
- Next, press "CH-" key to select "AUTO SCAN" and then press ">" key to continue
- Select "Start to Scan" and press ">" key to confirm
- When scanning is complete, the unit will tune to the first channel scanned.

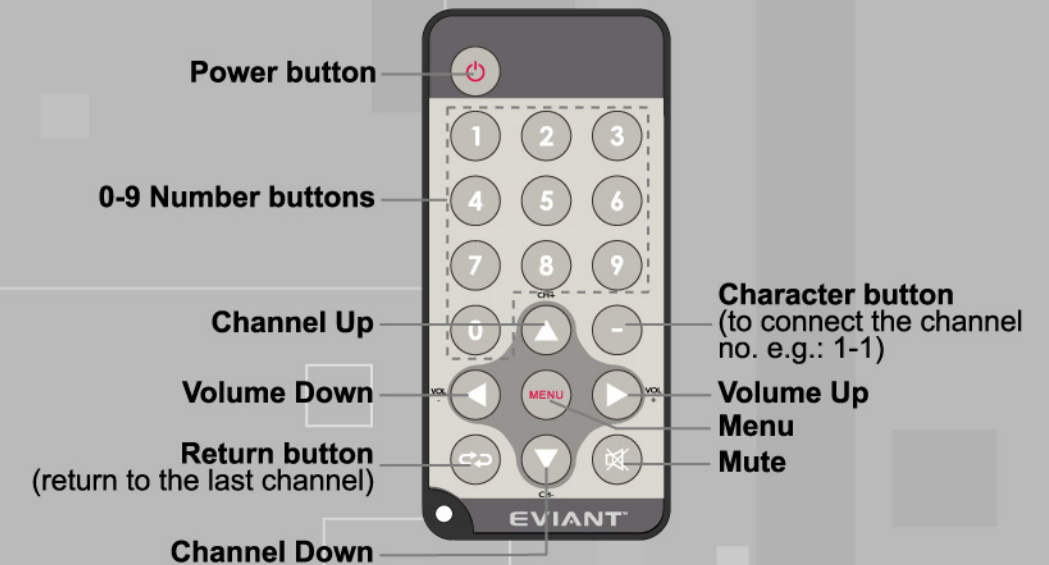


For more detailed information regarding picture, audio, and channel options, see the User Manual.

ACCESSORIES



Remote Control



Point remote control directly at the front of the TV no more than 15 feet away.

TV does not operate well in Motion. Place in stationary location to avoid signal loss.

